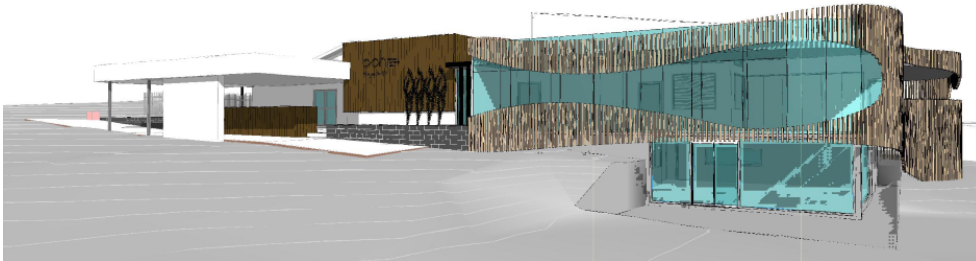


Portarlington Redevelopment Update



PLANNING PERMIT

Bellarine Community Health submitted an application for a planning permit to the City of Great Geelong at the end of July.

The Town Planner indicated support for the application, however advised BCH on November 17 that we were obliged to advertise the plans. We are now waiting for the advertising period to conclude. A decision is expected by mid-December.

Once the planning permit is issued, we intend to release the tender for a building contractor. Our hope is to be able to release the tender before the end of this year with works to commence in the first quarter of 2021.

Should requirements be imposed on us as a condition of the planning permit, we may be required to make further changes.

We are hopeful that tenders will come in within our budget, however current market conditions including the provision of new government funding for post COVID-19 stimulus projects, may require BCH to prioritise the most critical aspects of the development and stage the remainder of the build.

Groups and programs that have relocated will be kept informed of the construction timeline and timeframes for returning to the site.

The Portarlington Ladies Auxiliary Op shop and the Portarlington Food Assistance Program, both auspiced by BCH, are currently operating from a temporary building in the car park and from the St Andrew's church hall respectively.

WHAT IS INCLUDED IN THE PLANS?

The design has been finalised and BCH thanks all who have contributed to this process.

The design includes a new entry area/airlock along the east elevation, new waiting/activities area, consulting rooms, offices and amenities including disabled toilets.

New group rooms with flexible spaces have been included, along with a meeting room, kitchen, store and external activities area.

There will be minor internal alterations to the existing building including improved entry/access along the Fenwick Street frontage, and removal of internal walls to increase the size of the treatment room to accommodate an additional bed.

On the lower level the existing shed will be removed, and a new Op Shop created for the Portarlington Ladies Auxiliary. This will include retail display area, change rooms, storage, staff room, and external storage/bin area.

Project Completion Date: June 2021
Project Funder: Australian Government
Enquiries: Michelle Day 03 5258 0882